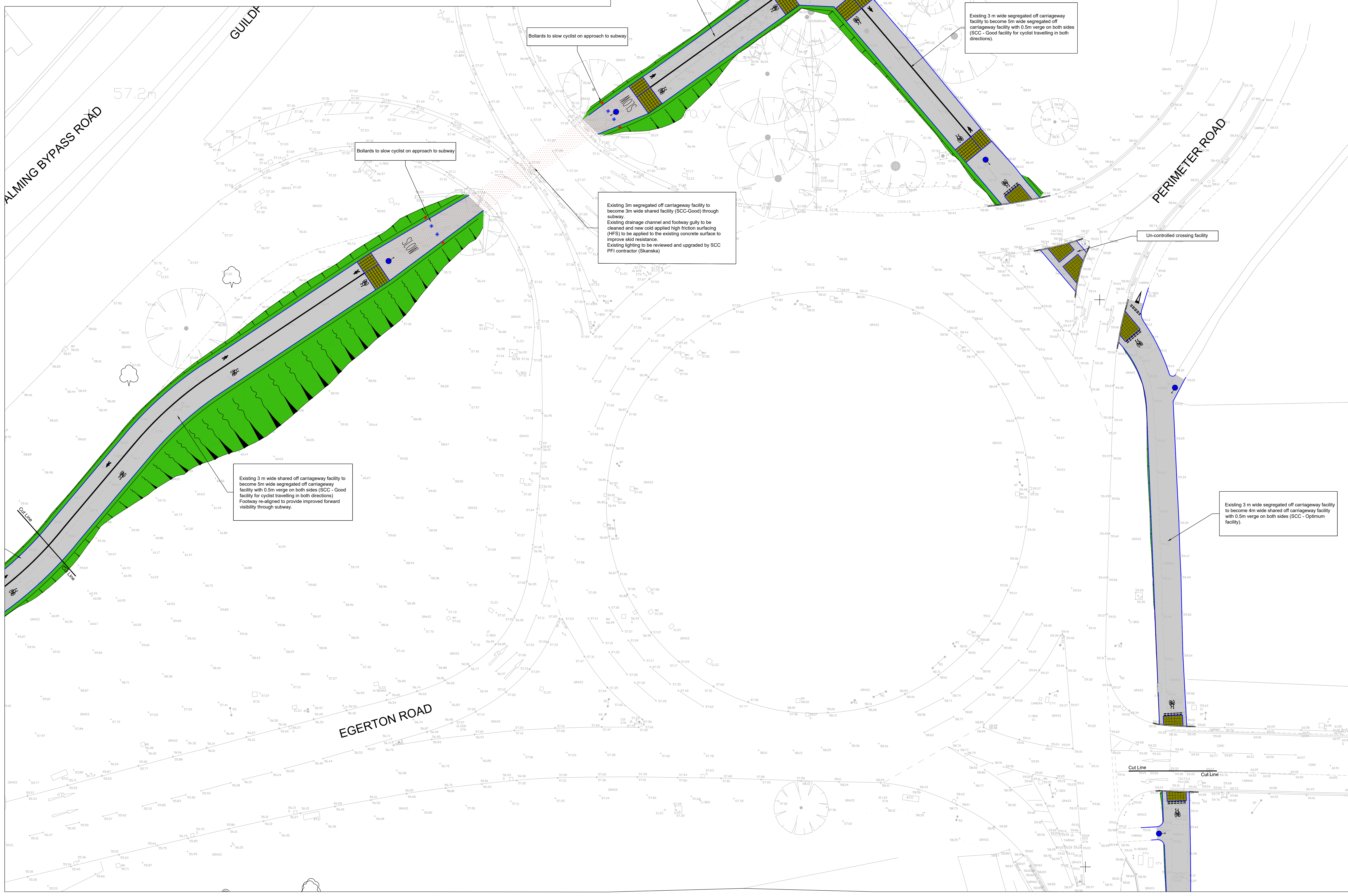
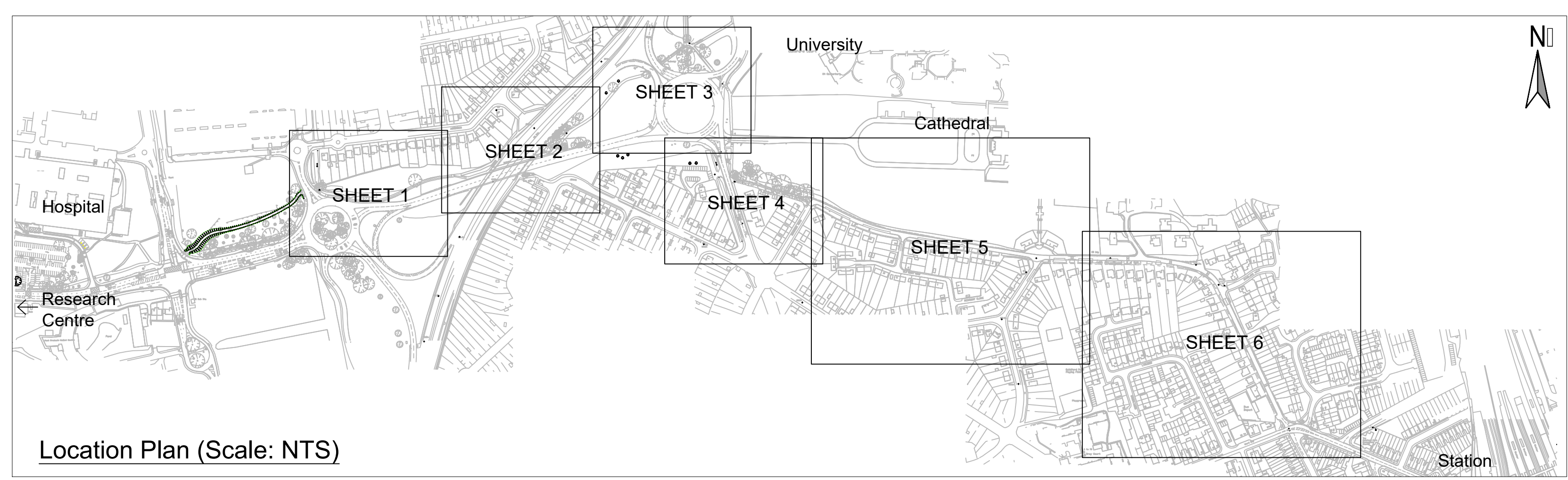


DO NOT SCALE: CONTRACTOR TO CHECK ALL DIMENSIONS AND REPORT ANY OMISSIONS OR ERRORS

- NOTES - General
- The information shown on this drawing is intended to provide a general outline of the highway improvement works. Please refer to the detailed design drawings for specific scheme details.
 - All works to be undertaken in accordance with Surrey County Council's standards.



- SCHEDULE OF CHANGES (SINCE REV D2):
- Sub-base of full footway construction amended to 100mm and 225mm at vehicle cross overs.
 - Extents of edgings increased in areas of subsidence.
 - Slab on edge removed and replaced with double kerbs.

FOR APPROVAL

D3	Refer to detailed drawings for changes	GO	DM	DM	08.07.19
D2	Refer to detailed drawings for changes	GO	DM	DM	16.05.19
D1	First Issue	GO	DM	DM	02.01.19
REV	DESCRIPTION	BY	CHK	APP	DATE



EXECUTIVE PARK
 AVALON WAY
 ANSTEY
 LEICESTER
 LE7 7GR
 TEL: +44 (0)116 234 8000
 FAX: +44 (0)116 234 8001
 e-mail: leicester@wyg.com



Project: Guildford Sustainable Movement Corridor 1

Drawing Title:
 Phase 2A: Ped/Cycle Highway Improvements
 Sheet 3
 General Arrangement

Scale @	A0	Drawn	Date	Checked	Date	Approved	Date
1:200		GO	02.01.19	DM	22.01.19	DM	22.01.19
Project No.	Office	Type	Drawing No.	Revision			
A081175-81	35	12	113	D3			