

West Clandon Neighbourhood Plan Referendum Information Statement

About this statement

A referendum on whether to adopt the West Clandon Neighbourhood Plan will be held for residents of the West Clandon Neighbourhood Area (West Clandon Parish) on **17 March 2022**.

This statement provides more information about the referendum, for example who can take part and how¹.

The neighbourhood plan referendum

The question that will be asked at the referendum is:

Do you want Guildford Borough Council to use the neighbourhood plan for West Clandon to help it decide planning applications in the neighbourhood area?

The referendum asks you to vote 'yes' or 'no' to this question.

For this question, you will receive a ballot paper, which you may use to record your vote.

If a majority of the votes received are in favour, the West Clandon Neighbourhood Plan will become part of the Development Plan for Guildford borough (see below) and help the Council and other planning decision makers to make decisions on planning applications in the West Clandon Neighbourhood Area.

The planning system

The UK has a plan-led system of town and country planning. Local Authorities (borough, district, and unitary Councils) and other decision makers, like planning inspectors, make planning decisions based on policies in the local Development Plan, national policy, and other material considerations. The Development Plan is the starting point for determining any planning application, so the planning policies within it help to decide how much and what type of development happens, what it looks like and where it goes. Guildford borough's Development Plan consists of:

- the Local Plan: Strategy and Sites 2015-2034
- the remaining policies of the Guildford Borough Local Plan 2003,
- waste and minerals plans produced by Surrey County Council,
- Policy NRM6 of the South East Plan, and
- any neighbourhood plans that have passed a referendum.

Neighbourhood plans

Neighbourhood plans are produced in consultation with local communities by parish or town councils or, in areas without a parish, by forums of residents and businesses. When a neighbourhood plan passes a local referendum it becomes part of the statutory Development Plan and its policies must be used to help determine planning applications within the designated neighbourhood area. Neighbourhood plans therefore allow communities considerable influence over development in their own areas.

¹ This statement is required by regulations 4(3)(a) and 4(3)(b)(v) of the Neighbourhood Planning (Referendum) Regulations 2012 (as amended).

West Clandon Neighbourhood Plan

The West Clandon Neighbourhood Plan was produced by West Clandon Parish Council in consultation with West Clandon parish residents and other stakeholders. It sets planning policies for the West Clandon Neighbourhood Area.

The parish council held a consultation on the draft Neighbourhood Plan before submitting it to Guildford Borough Council. The Council then held a further consultation, before sending the Plan and the consultation representations to an independent examiner to examine the Plan.

The examiner recommended a number of modifications to the Plan, which the Council agreed with, to ensure that it complies with the [basic conditions](#)² and other legislative requirements before proceeding to a referendum. The Referendum Version of the Plan is the final version of the Plan, and includes these modifications.

How to view the Neighbourhood Plan and other documents

The Plan and other specified documents³, as listed below, can be viewed online at <https://www.guildford.gov.uk/westclandon>. Paper copies of these documents are available to view at the following locations:

- Main reception, Guildford Borough Council, Millmead House, Millmead, Guildford, Surrey GU2 4BB (open 9am to 5pm Monday to Friday).
- Guildford Library, 77 North Street, Guildford, Surrey GU1 4AL (open Monday to Friday 9.30am–5.30pm, Saturday: 9.30am–5pm).

The specified documents are:

- The West Clandon Neighbourhood Plan (Referendum Version),
- The report made by the examiner on the West Clandon Neighbourhood Plan,
- Representations received during the Council's consultation, which were submitted to the examiner,
- The Council's Basic Conditions and Compliance statement; and
- A statement setting out general information as to town and country planning and the referendum (this information is contained within this Information Statement).

The referendum area and eligibility to vote

A person is entitled to vote in the referendum if on 17 March 2022:

- they are entitled to vote in a [local government](#) election in the referendum area, and
- their qualifying address for the election is in the referendum area.

A person's qualifying address is, in relation to a person registered in the register of electors, the address in respect of which they are entitled to be registered. This means that they must live at the address at which they are registered, and that this is the address that they are entitled to register for the purpose of voting (usually their main address).

Applications to be included on the register of electors for this referendum must be received no later than **23:59 on 1 March 2022**.

You can check whether you are registered to vote by calling 01483 444 115.

Individuals, organisations and groups may campaign for a 'yes' or 'no' vote. There is a legal limit to the amount of money that can be spent campaigning. The referendum expenses limit is £2,427.31. This limit

² Contained in Schedule 4B paragraph 8(2) of the Town and Country Planning Act 1990

³ Specified in regulation 4(3)(b) of the Neighbourhood Planning (Referendum) Regulations 2012 (as amended).

was calculated based on the number of persons entitled to vote in the referendum as of 1 February 2022, which was 1,107.

The referendum will be conducted in accordance with procedures that are similar to those used at local government elections.

How and where can I vote?

There are three ways to vote: in person, by post or by proxy.

In person

Vote at the polling station at

- **West Clandon Village Hall, The Street, West Clandon, GU4 7TD**
between 7am and 10pm on 17 March 2022.

By post

Fill in an application form and send it to The Electoral Registration Officer, Guildford Borough Council, Millmead House, Millmead, Guildford, Surrey, GU2 4BB by **5pm on 2 March 2022**.

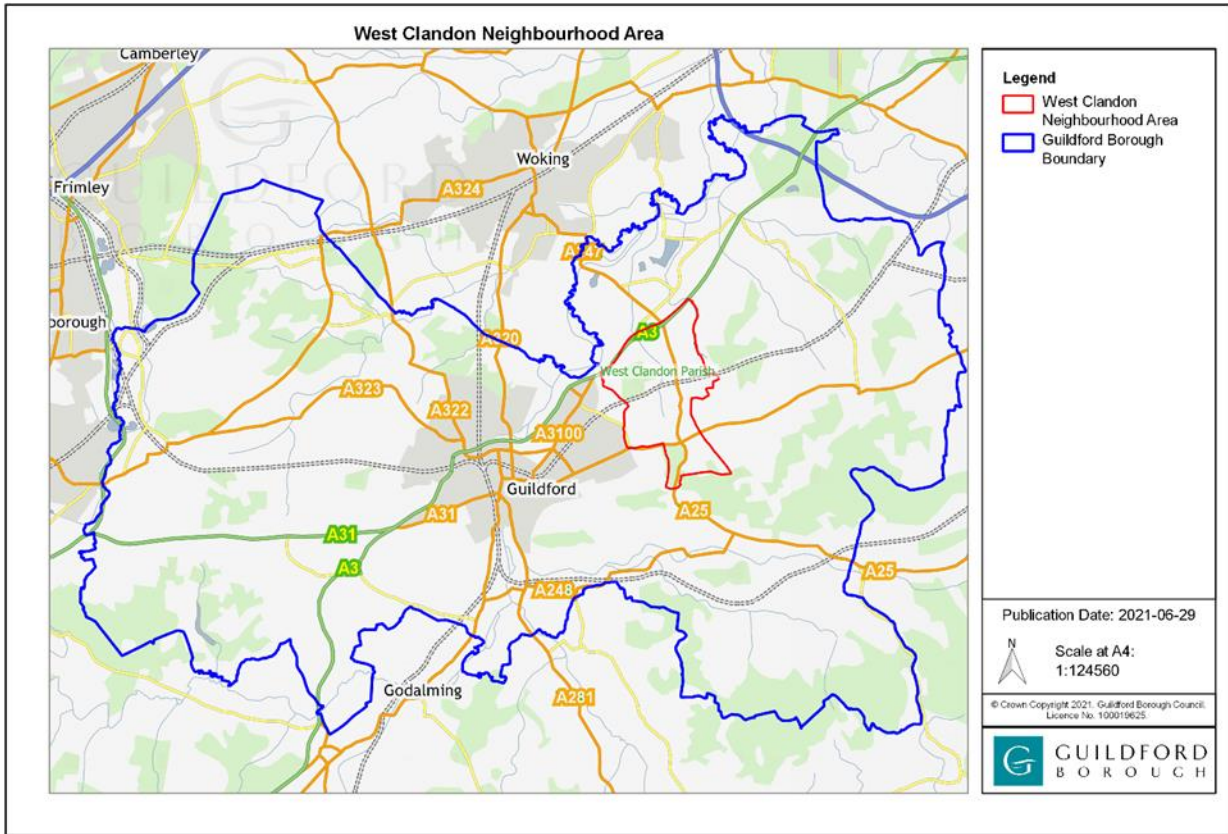
Ballot papers can be sent overseas, but you need to think about whether you will have time to receive and return your postal vote by 17 March 2022, in these cases a proxy is recommended.

You should receive your postal vote about a week before polling day. If it doesn't arrive in time, you can get a replacement up to 5pm on 17 March 2022. Replacement of spoilt or lost postal ballot papers can be obtained from 11 March 2022. For more information please call 01483 444 115.

By proxy

You may be able to vote by proxy. This means allowing somebody you trust to vote at your polling station on your behalf. The deadline to submit your proxy vote application is 5pm on 9 March 2022.

Postal and Proxy vote application forms are available from the Elections team on 01483 444 115 or can be downloaded from the Electoral Commission website at www.aboutmyvote.co.uk.



To see a more detailed map of the West Clandon Neighbourhood Area, please visit <https://www.guildford.gov.uk/westclandon>.